

Carey Rd between Roy Rd and Wilkinson Rd

March 11, 2019 To March 15, 2019



The data presented here is for information purposes only and should not be considered authoritative for construction, geotechnical, engineering, navigational, legal, or other site-specific uses. The information shared is owned by the Transportation Division of the Engineering Department at the District of Saanich. Accuracy is not guaranteed.

Start Date: 11-Mar-19
 Start Time: 0:06
 Station ID: C0011-02

Location 1: Carey Rd between Roy Rd and Wilkinson Rd
Note: Roy Rd and Wilkinson Rd

DATE:	March 11, 2019		March 12, 2019		March 13, 2019		March 14, 2019		March 15, 2019		WK AVG		WK AVG	HOURLY
	MON		TUE		WED		THURS		FRI		CH 1+2		%	
Time:	NB	SB	NB	SB	NB	SB	NB	SB	NB	SB	NB	SB		
12-1 AM			4	4	9	1	3	2			5	2	8	0.3%
1-2 AM			1	0	0	1	1	0			1	0	1	0.0%
2-3 AM			2	2	0	1	0	0			1	1	2	0.1%
3-4 AM			0	0	0	0	1	1			0	0	1	0.0%
4-5 AM			3	0	3	3	4	3			3	2	5	0.2%
5-6 AM			5	4	5	3	5	6			5	4	9	0.4%
6-7 AM			17	23	16	21	17	30			17	25	41	1.8%
7-8 AM			47	72	44	80	44	71			45	74	119	5.2%
8-9 AM			116	137	109	141	93	157			106	145	251	10.8%
9-10 AM			54	50	59	50	58	65			57	55	112	4.8%
10-11 AM			59	41	41	34	49	72			50	49	99	4.3%
11-12 PM			46	46	52	44	89	81			62	57	119	5.2%
12-1 PM			47	48	56	46	73	110			59	68	127	5.5%
1-2 PM			55	45	60	53	52	74			56	57	113	4.9%
2-3 PM			55	111	84	117	77	108			72	112	184	8.0%
3-4 PM			100	100	113	159	131	148			115	136	250	10.8%
4-5 PM			118	165	119	142	124	169			120	159	279	12.1%
5-6 PM			127	129	119	102	101	97			116	109	225	9.7%
6-7 PM			60	60	63	67	63	51			62	59	121	5.2%
7-8 PM			42	35	40	52	46	41			43	43	85	3.7%
8-9 PM			46	33	54	31	30	30			43	31	75	3.2%
9-10 PM			31	22	24	20	23	26			26	23	49	2.1%
10-11 PM			14	19	8	10	14	12			12	14	26	1.1%
11-12 AM			10	7	7	5	5	6			7	6	13	0.6%
LANES			1059	1153	1085	1183	1103	1360			1082	1232	2314	100.0%
TOTAL			2212		2268		2463				2320			
	MON		TUE		WED		THURS		FRI		WK AVG			

PEAK HOUR					TOTAL VEHICALS-PEAK PERIODS		2 HOUR PEAK INTERVALS				
MAX. 7 - 9 am PEAK HOUR	251	⇒	10.8%	between 8-9 AM	1120	⇒	6 HR TOTAL	2 HR AM (7 - 9 AM)			
MAX. 7 - 11 am PEAK HOUR	251	⇒	10.8%	between 8-9 AM	874	⇒	4 HR TOTAL	VEH / HR	VEH / 2HR	2 HR %	
MAX. 11 am - 1 pm PEAK HOUR	127	⇒	5.5%	between 12-1 PM				7-8 AM	119	370	16.0%
MAX. 11 am - 3 pm PEAK HOUR	184	⇒	8.0%	between 2-3 PM				8-9 AM	251		
MAX. 4 - 6 pm PEAK HOUR	279	⇒	12.1%	between 4-5 PM				2 HR NOON (11 - 1 PM)			
MAX. 3 - 6 pm PEAK HOUR	279	⇒	12.1%	between 4-5 PM				VEH / HR	VEH / 2HR	2 HR %	
								11-12 PM	119	246	10.6%
								12-1 PM	127		
								2 HR PM (4 - 6 PM)			
								VEH / HR	VEH / 2HR	2 HR %	
								4-5 PM	279	504	21.8%
								5-6 PM	225		

Carey Rd between Roy Rd and Wilkinson Rd

Northbound

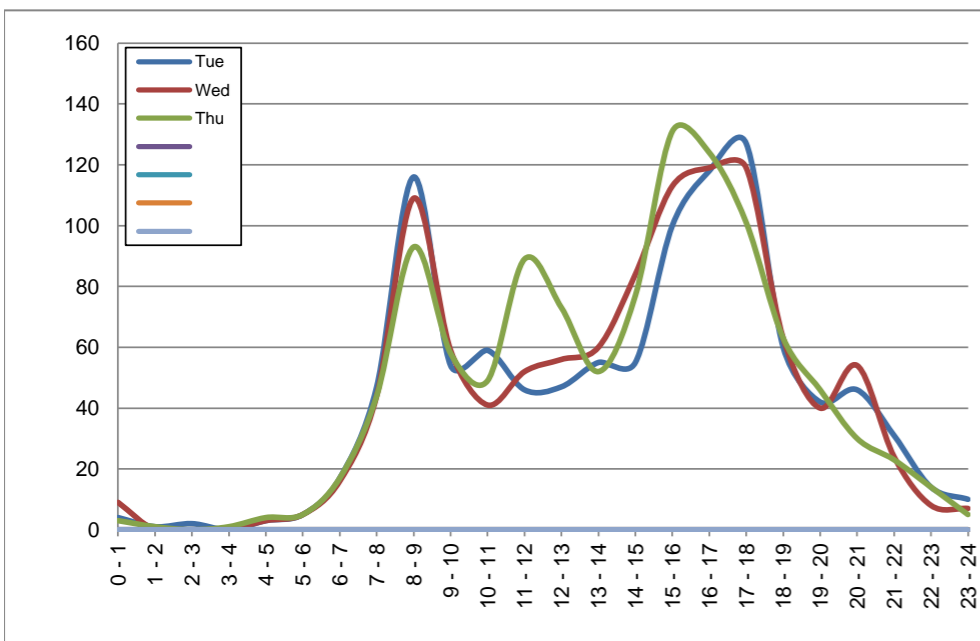
March 12, 2019 to March 14, 2019

Hourly Volumes

Time Period	Tue	Wed	Thu				
	Mar 12	Mar 13	Mar 14				
0 - 1	4	9	3				
1 - 2	1	0	1				
2 - 3	2	0	0				
3 - 4	0	0	1				
4 - 5	3	3	4				
5 - 6	5	5	5				
6 - 7	17	16	17				
7 - 8	47	44	44				
8 - 9	116	109	93				
9 - 10	54	59	58				
10 - 11	59	41	49				
11 - 12	46	52	89				
12 - 13	47	56	73				
13 - 14	55	60	52				
14 - 15	55	84	77				
15 - 16	100	113	131				
16 - 17	118	119	124				
17 - 18	127	119	101				
18 - 19	60	63	63				
19 - 20	42	40	46				
20 - 21	46	54	30				
21 - 22	31	24	23				
22 - 23	14	8	14				
23 - 24	10	7	5				
Day Total	1059	1085	1103				

15-Minute Volumes

Time Start	Tue	Wed	Thu				
	Mar 12	Mar 13	Mar 14				
0:00	3	5	1				
0:15	0	0	1				
0:30	1	4	0				
0:45	0	0	1				
1:00	0	0	0				
1:15	0	0	0				
1:30	0	0	1				
1:45	1	0	0				
2:00	0	0	0				
2:15	2	0	0				
2:30	0	0	0				
2:45	0	0	0				
3:00	0	0	0				
3:15	0	0	1				
3:30	0	0	0				
3:45	0	0	0				
4:00	0	0	3				
4:15	1	0	0				
4:30	0	1	1				
4:45	2	2	0				
5:00	2	2	1				
5:15	1	0	1				
5:30	2	0	2				
5:45	0	3	1				
6:00	1	0	3				
6:15	3	4	2				
6:30	8	5	9				
6:45	5	7	3				
7:00	9	7	8				
7:15	8	8	8				
7:30	10	12	13				
7:45	20	17	15				
8:00	20	16	21				
8:15	26	39	27				
8:30	34	33	20				
8:45	36	21	25				
9:00	19	16	14				
9:15	9	23	18				
9:30	10	12	16				
9:45	16	8	10				
10:00	21	12	8				
10:15	11	10	17				
10:30	15	7	9				
10:45	12	12	15				
11:00	9	11	19				
11:15	10	17	31				
11:30	14	14	20				
11:45	13	10	19				
12:00	15	12	16				
12:15	9	16	18				
12:30	13	16	21				
12:45	10	12	18				
13:00	16	17	21				
13:15	17	12	15				
13:30	12	14	10				
13:45	10	17	6				
14:00	9	18	12				
14:15	10	14	15				
14:30	16	19	16				
14:45	20	33	34				
15:00	16	29	27				
15:15	25	30	39				
15:30	26	28	34				
15:45	33	26	31				
16:00	32	19	28				
16:15	28	35	34				
16:30	26	37	29				
16:45	32	28	33				
17:00	31	32	30				
17:15	41	33	28				
17:30	27	33	26				
17:45	28	21	17				
18:00	9	16	14				
18:15	21	15	14				
18:30	14	17	23				
18:45	16	15	12				
19:00	10	12	11				
19:15	13	10	14				
19:30	12	8	12				
19:45	7	10	9				
20:00	6	18	6				
20:15	16	16	10				
20:30	14	6	6				
20:45	10	14	8				
21:00	14	8	11				
21:15	4	9	2				
21:30	4	3	6				
21:45	9	4	4				
22:00	6	2	1				
22:15	3	3	3				
22:30	2	3	3				
22:45	3	0	7				
23:00	7	3	1				
23:15	2	3	2				
23:30	0	0	1				
23:45	1	1	1				



Site notes:

Carey Rd between Roy Rd and Wilkinson Rd

Southbound

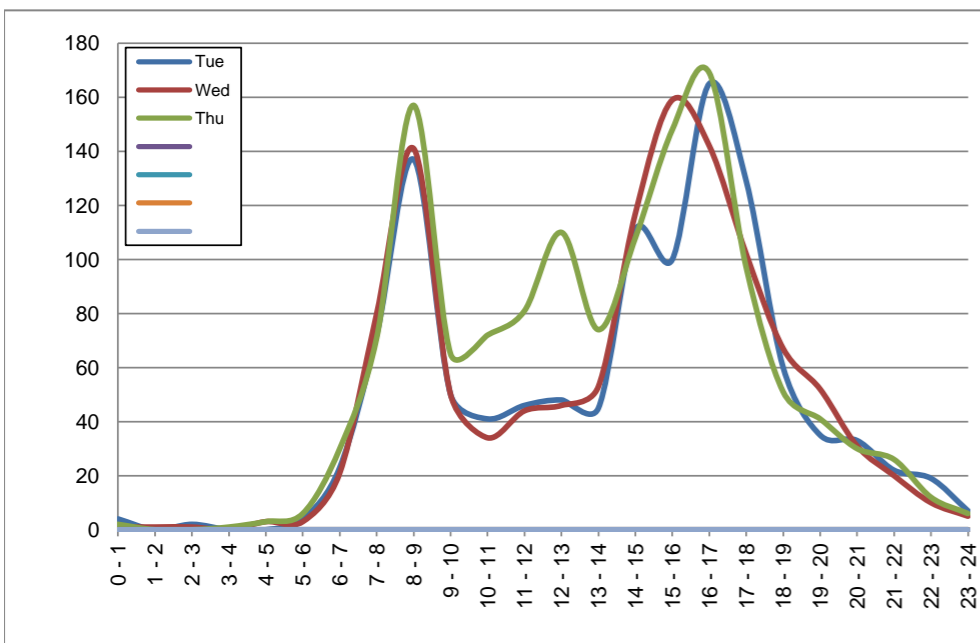
March 12, 2019 to March 14, 2019

Hourly Volumes

Time Period	Tue	Wed	Thu				
	Mar 12	Mar 13	Mar 14				
0 - 1	4	1	2				
1 - 2	0	1	0				
2 - 3	2	1	0				
3 - 4	0	0	1				
4 - 5	0	3	3				
5 - 6	4	3	6				
6 - 7	23	21	30				
7 - 8	72	80	71				
8 - 9	137	141	157				
9 - 10	50	50	65				
10 - 11	41	34	72				
11 - 12	46	44	81				
12 - 13	48	46	110				
13 - 14	45	53	74				
14 - 15	111	117	108				
15 - 16	100	159	148				
16 - 17	165	142	169				
17 - 18	129	102	97				
18 - 19	60	67	51				
19 - 20	35	52	41				
20 - 21	33	31	30				
21 - 22	22	20	26				
22 - 23	19	10	12				
23 - 24	7	5	6				
Day Total	1153	1183	1360				

15-Minute Volumes

Time Start	Tue	Wed	Thu				
	Mar 12	Mar 13	Mar 14				
0:00	3	1	2				
0:15	0	0	0				
0:30	1	0	0				
0:45	0	0	0				
1:00	0	0	0				
1:15	0	1	0				
1:30	0	0	0				
1:45	0	0	0				
2:00	0	0	0				
2:15	2	1	0				
2:30	0	0	0				
2:45	0	0	0				
3:00	0	0	1				
3:15	0	0	0				
3:30	0	0	0				
3:45	0	0	0				
4:00	0	1	2				
4:15	0	0	0				
4:30	0	1	0				
4:45	0	1	1				
5:00	0	0	1				
5:15	0	0	1				
5:30	1	1	2				
5:45	3	2	2				
6:00	1	1	3				
6:15	5	5	5				
6:30	7	8	9				
6:45	10	7	13				
7:00	12	14	11				
7:15	12	14	13				
7:30	27	29	20				
7:45	21	23	27				
8:00	26	31	32				
8:15	45	44	49				
8:30	40	41	43				
8:45	26	25	33				
9:00	15	18	16				
9:15	14	13	16				
9:30	11	12	15				
9:45	10	7	18				
10:00	5	8	33				
10:15	12	13	19				
10:30	12	9	14				
10:45	12	4	6				
11:00	13	7	10				
11:15	9	13	13				
11:30	13	15	17				
11:45	11	9	41				
12:00	12	4	29				
12:15	14	14	25				
12:30	11	9	34				
12:45	11	19	22				
13:00	11	16	33				
13:15	18	14	17				
13:30	10	13	15				
13:45	6	10	9				
14:00	20	19	12				
14:15	24	23	28				
14:30	41	40	42				
14:45	26	35	26				
15:00	17	31	27				
15:15	22	44	25				
15:30	30	43	39				
15:45	31	41	57				
16:00	39	33	43				
16:15	42	48	52				
16:30	46	23	36				
16:45	38	38	38				
17:00	32	25	30				
17:15	33	27	26				
17:30	33	33	25				
17:45	31	17	16				
18:00	22	17	15				
18:15	22	25	11				
18:30	12	14	16				
18:45	4	11	9				
19:00	7	16	13				
19:15	12	17	9				
19:30	10	9	11				
19:45	6	10	8				
20:00	7	11	8				
20:15	10	5	7				
20:30	7	8	10				
20:45	9	7	5				
21:00	9	3	8				
21:15	4	8	6				
21:30	4	5	9				
21:45	5	4	3				
22:00	8	1	5				
22:15	8	3	1				
22:30	2	4	3				
22:45	1	2	3				
23:00	5	3	1				
23:15	1	1	4				
23:30	1	1	1				
23:45	0	0	0				



Site notes:

Vehicle Speed Summary

Saanich Engineering Department

Count Id: C0011-02

Filename: Carey Rd between Roy Rd and Wilkinson Rd-Mar-2019.xlsm

Location: Carey Rd between Roy Rd and Wilkinson Rd

Note: Roy Rd and Wilkinson Rd

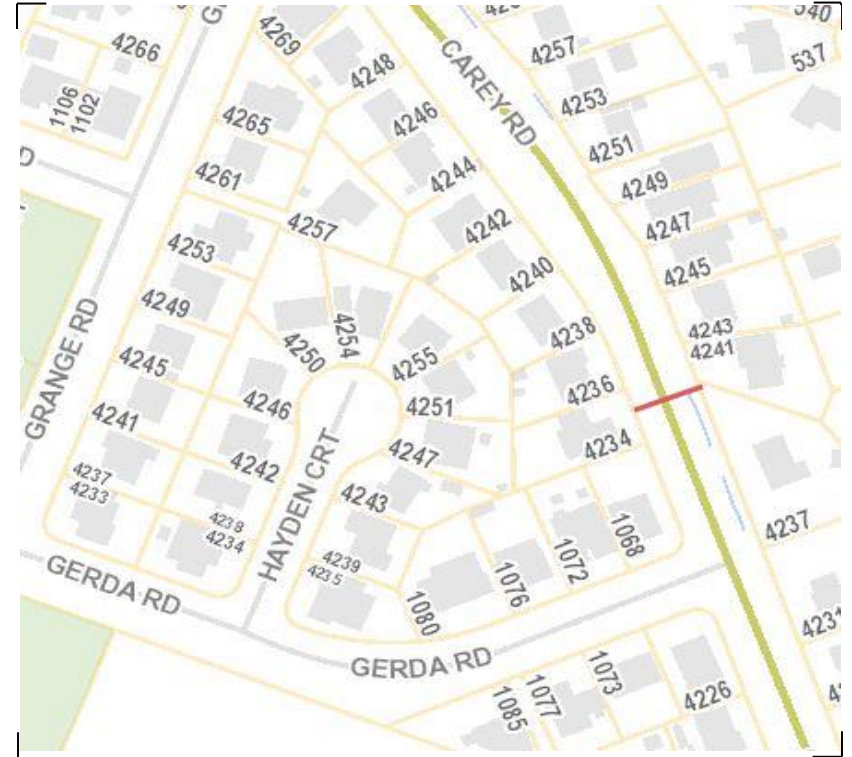
Direction: **North-South**

Dates: **March 11, 2019 To March 15, 2019**

Filtered data

AVG. SPEED	28 mph	45 km/h
50 % SPEED	28 mph	46 km/h
85 % SPEED	33 mph	54 km/h
95 % SPEED	36 mph	59 km/h

Location Map



Carey Rd between Roy Rd and Wilkinson Rd

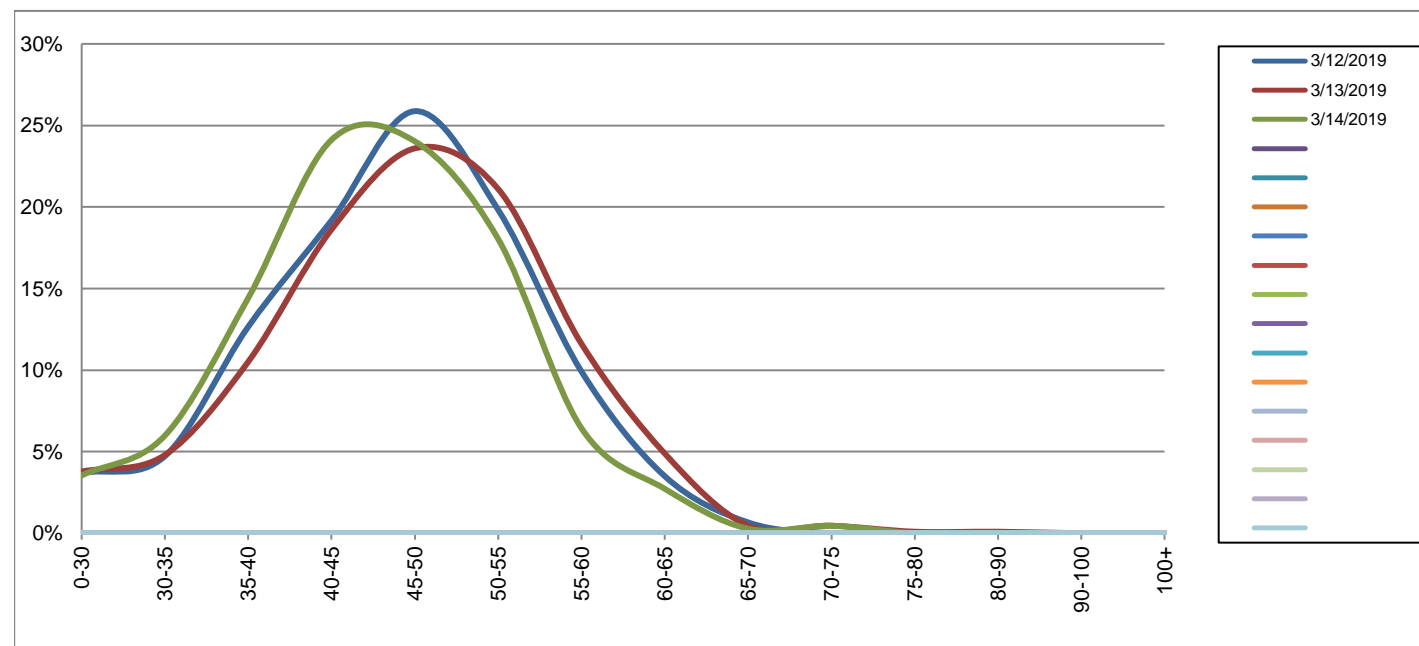
Northbound

March 12, 2019 to March 14, 2019

Daily Speed Bin Percentages															Daily Speed Bin Volumes														Total	Avg.
Bin #	1	2	3	4	5	6	7	8	9	10	11	12	13	14	1	2	3	4	5	6	7	8	9	10	11	12	13	14	Volume	Speed
Bin Speeds	0-30	30-35	35-40	40-45	45-50	50-55	55-60	60-65	65-70	70-75	75-80	80-90	90-100	100+	0-30	30-35	35-40	40-45	45-50	50-55	55-60	60-65	65-70	70-75	75-80	80-90	90-100	100+		
3/12/2019	3.7%	4.7%	12.7%	19.2%	25.9%	19.8%	9.9%	3.5%	0.7%	0.0%	0.0%	0.0%	0.0%	0.0%	39	50	134	203	274	210	105	37	7	0	0	0	0	0	1059	46
3/13/2019	3.8%	4.8%	10.5%	18.6%	23.6%	21.1%	11.6%	4.9%	0.5%	0.5%	0.1%	0.1%	0.0%	0.0%	41	52	114	202	256	229	126	53	5	5	1	1	0	0	1085	47
3/14/2019	3.5%	6.0%	14.4%	24.1%	24.0%	18.0%	6.4%	2.7%	0.3%	0.5%	0.0%	0.0%	0.0%	0.0%	39	66	159	266	265	199	71	30	3	5	0	0	0	0	1103	45
Total	3.7%	5.2%	12.5%	20.7%	24.5%	19.6%	9.3%	3.7%	0.5%	0.3%	0.0%	0.0%	0.0%	0.0%	119	168	407	671	795	638	302	120	15	10	1	1	0	0	3247	46

Speed Data Summary

Bin #	1	2	3	4	5	6	7	8	9	10	11	12	13	14	Total
Bin Speeds	0-30	30-35	35-40	40-45	45-50	50-55	55-60	60-65	65-70	70-75	75-80	80-90	90-100	100+	
Survey Total	119	168	407	671	795	638	302	120	15	10	1	1	0	0	3247
% Total	3.7%	5.2%	12.5%	20.7%	24.5%	19.6%	9.3%	3.7%	0.5%	0.3%	0.0%	0.0%	0.0%	0.0%	100%
Accumulated %	3.7%	8.8%	21.4%	42.0%	66.5%	86.2%	95.5%	99.2%	99.6%	99.9%	100.0%	100.0%	100.0%	100%	
Inverse Accum. %	96.3%	91.2%	78.6%	58.0%	33.5%	13.8%	4.5%	0.8%	0.4%	0.1%	0.0%	0.0%	0.0%	0.0%	
Average Speed	46 KM/H														



Site notes:

Carey Rd between Roy Rd and Wilkinson Rd

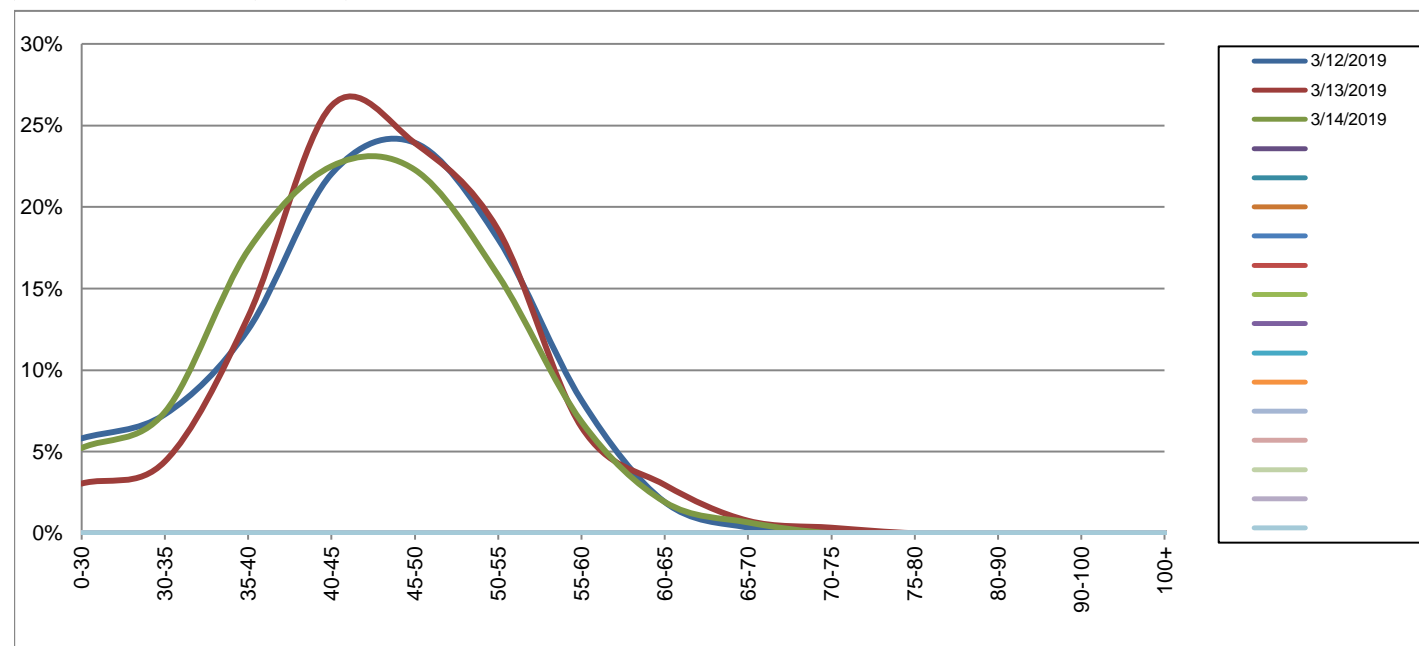
Southbound

March 12, 2019 to March 14, 2019

Daily Speed Bin Percentages															Daily Speed Bin Volumes														Total	Avg.
Bin #	1	2	3	4	5	6	7	8	9	10	11	12	13	14	1	2	3	4	5	6	7	8	9	10	11	12	13	14	Volume	Speed
Bin Speeds	0-30	30-35	35-40	40-45	45-50	50-55	55-60	60-65	65-70	70-75	75-80	80-90	90-100	100+	0-30	30-35	35-40	40-45	45-50	50-55	55-60	60-65	65-70	70-75	75-80	80-90	90-100	100+		
3/12/2019	5.8%	7.3%	12.5%	22.0%	23.9%	18.0%	8.2%	1.9%	0.3%	0.0%	0.0%	0.0%	0.0%	0.0%	67	84	144	254	276	208	94	22	4	0	0	0	0	0	1153	44
3/13/2019	3.0%	4.4%	13.3%	26.2%	23.9%	18.6%	6.5%	3.0%	0.8%	0.3%	0.0%	0.0%	0.0%	0.0%	36	52	157	310	283	220	77	35	9	4	0	0	0	0	1183	45
3/14/2019	5.2%	7.4%	17.4%	22.5%	22.3%	15.8%	6.8%	1.9%	0.7%	0.0%	0.0%	0.0%	0.0%	0.0%	71	101	236	306	303	215	93	26	9	0	0	0	0	0	1360	44
Total	4.7%	6.4%	14.5%	23.5%	23.3%	17.4%	7.1%	2.2%	0.6%	0.1%	0.0%	0.0%	0.0%	0.0%	174	237	537	870	862	643	264	83	22	4	0	0	0	0	3696	44

Speed Data Summary

Bin #	1	2	3	4	5	6	7	8	9	10	11	12	13	14	Total
Bin Speeds	0-30	30-35	35-40	40-45	45-50	50-55	55-60	60-65	65-70	70-75	75-80	80-90	90-100	100+	
Survey Total	174	237	537	870	862	643	264	83	22	4	0	0	0	0	3696
% Total	4.7%	6.4%	14.5%	23.5%	23.3%	17.4%	7.1%	2.2%	0.6%	0.1%	0.0%	0.0%	0.0%	0.0%	100%
Accumulated %	4.7%	11.1%	25.6%	49.2%	72.5%	89.9%	97.1%	99.3%	99.9%	100.0%	100.0%	100.0%	100.0%	100%	
Inverse Accum. %	95.3%	88.9%	74.4%	50.8%	27.5%	10.1%	2.9%	0.7%	0.1%	0.0%	0.0%	0.0%	0.0%	0.0%	
Average Speed	44 KM/H														



Site notes:

Carey Rd between Roy Rd and Wilkinson Rd

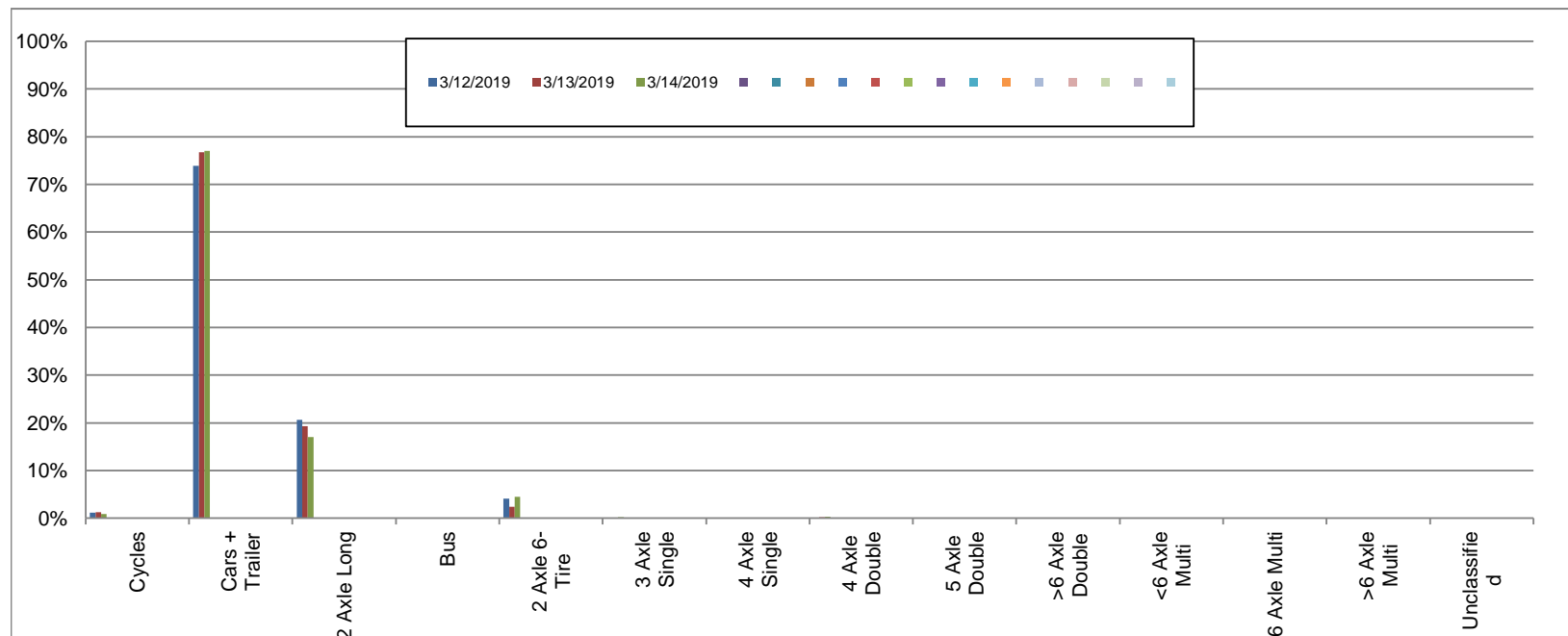
Northbound

March 12, 2019 to March 14, 2019

Daily Class Bin Percentages															Daily Class Bin Volumes											Total Volume				
Bin #	1	2	3	4	5	6	7	8	9	10	11	12	13	14	1	2	3	4	5	6	7	8	9	10	11		12	13	14	
Bin Class	Cycles	Cars + Trailer	2 Axle Long	Bus	2 Axle 6-Tire	3 Axle Single	4 Axle Single	4 Axle Double	5 Axle Double	>6 Axle Double	<6 Axle Multi	6 Axle Multi	>6 Axle Multi	Unclassified	Cycles	Cars + Trailer	2 Axle Long	Bus	2 Axle 6-Tire	3 Axle Single	4 Axle Single	4 Axle Double	5 Axle Double	>6 Axle Double	<6 Axle Multi	6 Axle Multi	>6 Axle Multi	Unclassified		
3/12/2019	1.1%	73.9%	20.6%	0.0%	4.1%	0.1%	0.0%	0.1%	0.0%	0.0%	0.0%	0.0%	0.0%	0.1%	12	783	218	0	43	1	0	1	0	0	0	0	0	0	1	1059
3/13/2019	1.3%	76.8%	19.3%	0.0%	2.4%	0.1%	0.0%	0.2%	0.0%	0.0%	0.0%	0.0%	0.0%	0.0%	14	833	209	0	26	1	0	2	0	0	0	0	0	0	0	1085
3/14/2019	0.9%	77.1%	17.0%	0.1%	4.4%	0.2%	0.0%	0.3%	0.0%	0.0%	0.0%	0.0%	0.0%	0.0%	10	850	188	1	49	2	0	3	0	0	0	0	0	0	0	1103
Total	1.1%	75.9%	18.9%	0.0%	3.6%	0.1%	0.0%	0.2%	0.0%	0.0%	0.0%	0.0%	0.0%	0.0%	36	2466	615	1	118	4	0	6	0	0	0	0	0	1	3247	

Class Data Summary

Bin #	1	2	3	4	5	6	7	8	9	10	11	12	13	14	Total Volume
Bin Class	Cycles	Cars + Trailer	2 Axle Long	Bus	2 Axle 6-Tire	3 Axle Single	4 Axle Single	4 Axle Double	5 Axle Double	>6 Axle Double	<6 Axle Multi	6 Axle Multi	>6 Axle Multi	Unclassified	Total Volume
Survey Total	36	2466	615	1	118	4	0	6	0	0	0	0	0	1	3247
% Total	1.1%	75.9%	18.9%	0.0%	3.6%	0.1%	0.0%	0.2%	0.0%	0.0%	0.0%	0.0%	0.0%	0.0%	100%
Accumulated %	1.1%	77.1%	96.0%	96.0%	99.7%	99.8%	99.8%	100.0%	100.0%	100.0%	100.0%	100.0%	100.0%	100.0%	
Inv. Accum. %	98.9%	22.9%	4.0%	4.0%	0.3%	0.2%	0.2%	0.0%	0.0%	0.0%	0.0%	0.0%	0.0%	0.0%	



Classification Descriptions

Bin #	Bin Description
1	Motorcycles
2	Passenger cars, including those with recreational trailers
3	2-axle pick-ups, vans, and RVs, including those with recreational trailers
4	Buses
5	2-axle, 6-tire single units
6	3-axle single units
7	4-axle single units
8	3-axle or 4-axle double unit
9	5-axle double unit
10	6-, 7-, or 8-axle double unit
11	5-axle multiple unit
12	6-axle multiple unit
13	7-or-more-axle multiple unit
14	Vehicles that could not be classified

Site notes:

Carey Rd between Roy Rd and Wilkinson Rd

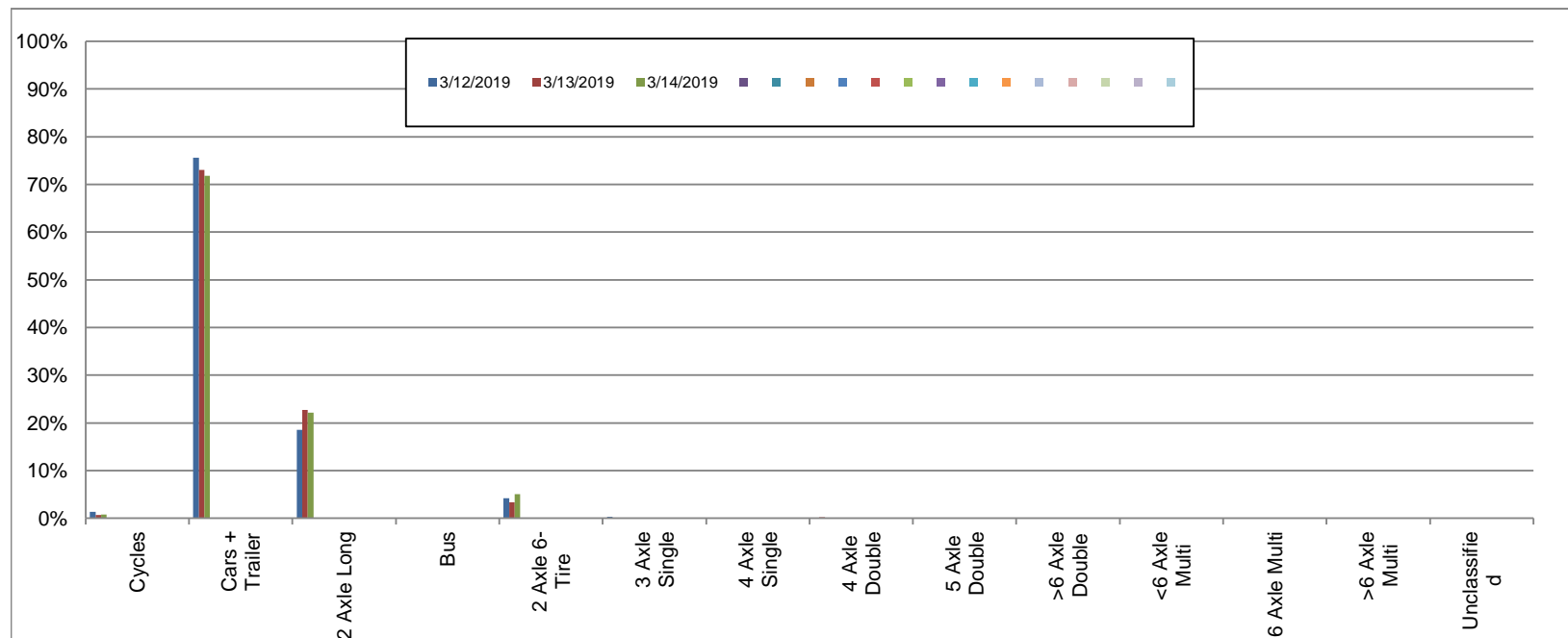
Southbound

March 12, 2019 to March 14, 2019

Daily Class Bin Percentages															Daily Class Bin Volumes											Total Volume				
Bin #	1	2	3	4	5	6	7	8	9	10	11	12	13	14	1	2	3	4	5	6	7	8	9	10	11		12	13	14	
Bin Class	Cycles	Cars + Trailer	2 Axle Long	Bus	2 Axle 6-Tire	3 Axle Single	4 Axle Single	4 Axle Double	5 Axle Double	>6 Axle Double	<6 Axle Multi	6 Axle Multi	>6 Axle Multi	Unclassified	Cycles	Cars + Trailer	2 Axle Long	Bus	2 Axle 6-Tire	3 Axle Single	4 Axle Single	4 Axle Double	5 Axle Double	>6 Axle Double	<6 Axle Multi	6 Axle Multi	>6 Axle Multi	Unclassified		
3/12/2019	1.3%	75.6%	18.6%	0.1%	4.2%	0.3%	0.0%	0.0%	0.0%	0.0%	0.0%	0.0%	0.0%	0.0%	15	872	214	1	48	3	0	0	0	0	0	0	0	0	0	1153
3/13/2019	0.7%	73.0%	22.7%	0.1%	3.3%	0.0%	0.0%	0.2%	0.0%	0.0%	0.0%	0.0%	0.0%	0.0%	8	864	269	1	39	0	0	2	0	0	0	0	0	0	0	1183
3/14/2019	0.8%	71.8%	22.1%	0.0%	5.1%	0.1%	0.0%	0.1%	0.0%	0.0%	0.0%	0.0%	0.0%	0.0%	11	976	301	0	69	1	0	2	0	0	0	0	0	0	0	1360
Total	0.9%	73.4%	21.2%	0.1%	4.2%	0.1%	0.0%	0.1%	0.0%	0.0%	0.0%	0.0%	0.0%	0.0%	34	2712	784	2	156	4	0	4	0	0	0	0	0	0	3696	

Class Data Summary

Bin #	1	2	3	4	5	6	7	8	9	10	11	12	13	14	Total Volume
Bin Class	Cycles	Cars + Trailer	2 Axle Long	Bus	2 Axle 6-Tire	3 Axle Single	4 Axle Single	4 Axle Double	5 Axle Double	>6 Axle Double	<6 Axle Multi	6 Axle Multi	>6 Axle Multi	Unclassified	Total Volume
Survey Total	34	2712	784	2	156	4	0	4	0	0	0	0	0	0	3696
% Total	0.9%	73.4%	21.2%	0.1%	4.2%	0.1%	0.0%	0.1%	0.0%	0.0%	0.0%	0.0%	0.0%	0.0%	100%
Accumulated %	0.9%	74.3%	95.5%	95.6%	99.8%	99.9%	99.9%	100.0%	100.0%	100.0%	100.0%	100.0%	100.0%	100.0%	
Inv. Accum. %	99.1%	25.7%	4.5%	4.4%	0.2%	0.1%	0.1%	0.0%	0.0%	0.0%	0.0%	0.0%	0.0%	0.0%	



Classification Descriptions

Bin #	Bin Description
1	Motorcycles
2	Passenger cars, including those with recreational trailers
3	2-axle pick-ups, vans, and RVs, including those with recreational trailers
4	Buses
5	2-axle, 6-tire single units
6	3-axle single units
7	4-axle single units
8	3-axle or 4-axle double unit
9	5-axle double unit
10	6-, 7-, or 8-axle double unit
11	5-axle multiple unit
12	6-axle multiple unit
13	7-or-more-axle multiple unit
14	Vehicles that could not be classified

Site notes: